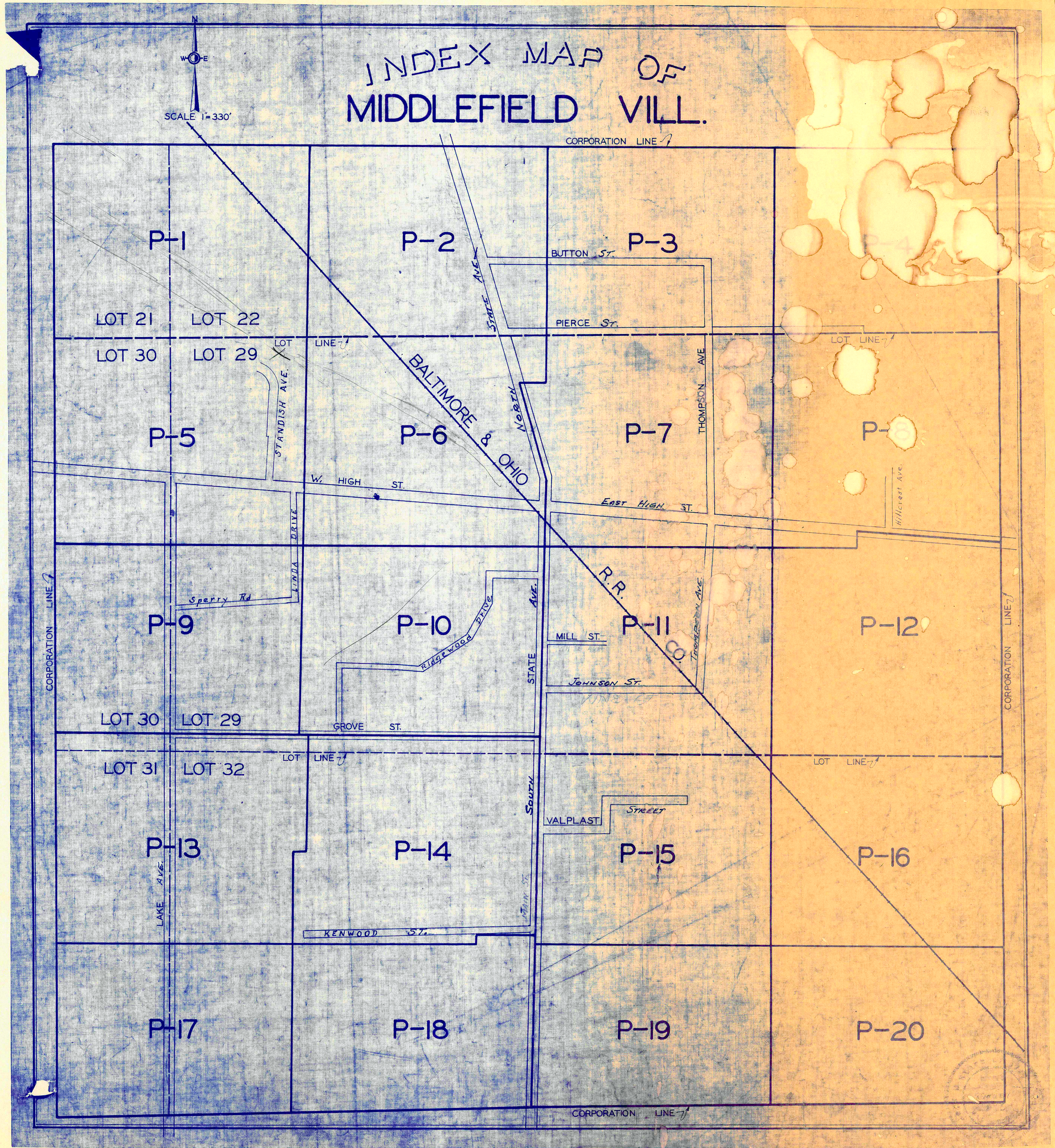
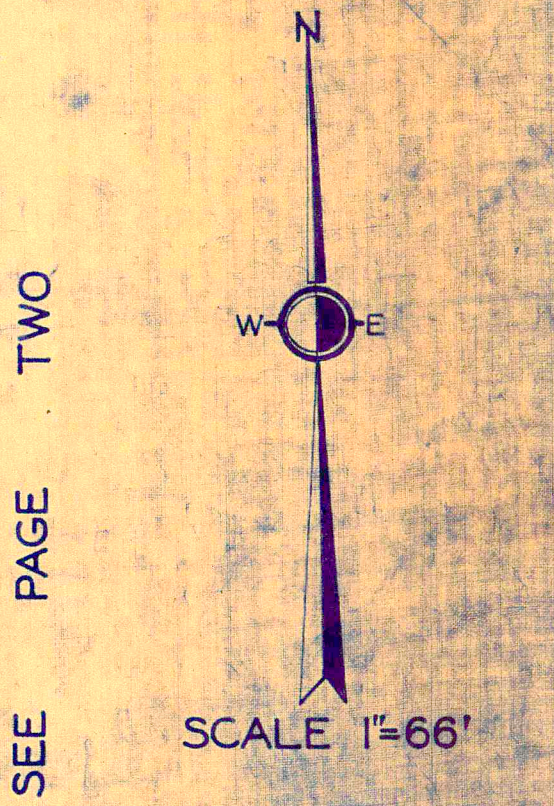
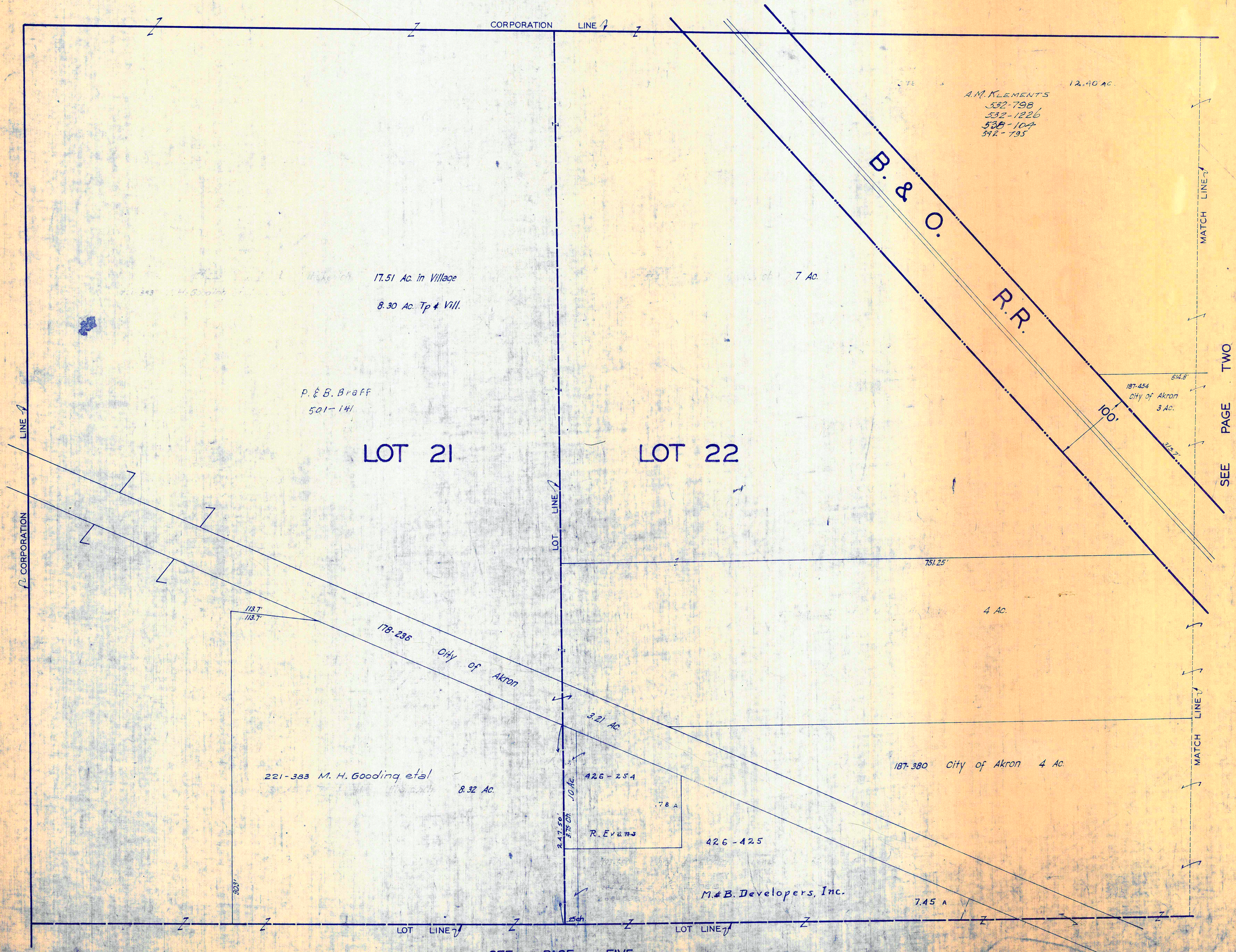


INDEX MAP OF MIDDLEFIELD VILL.

SCALE 1"=330'



PRINTED
JAN 14
GEAUGA COUNTY ENGINEER



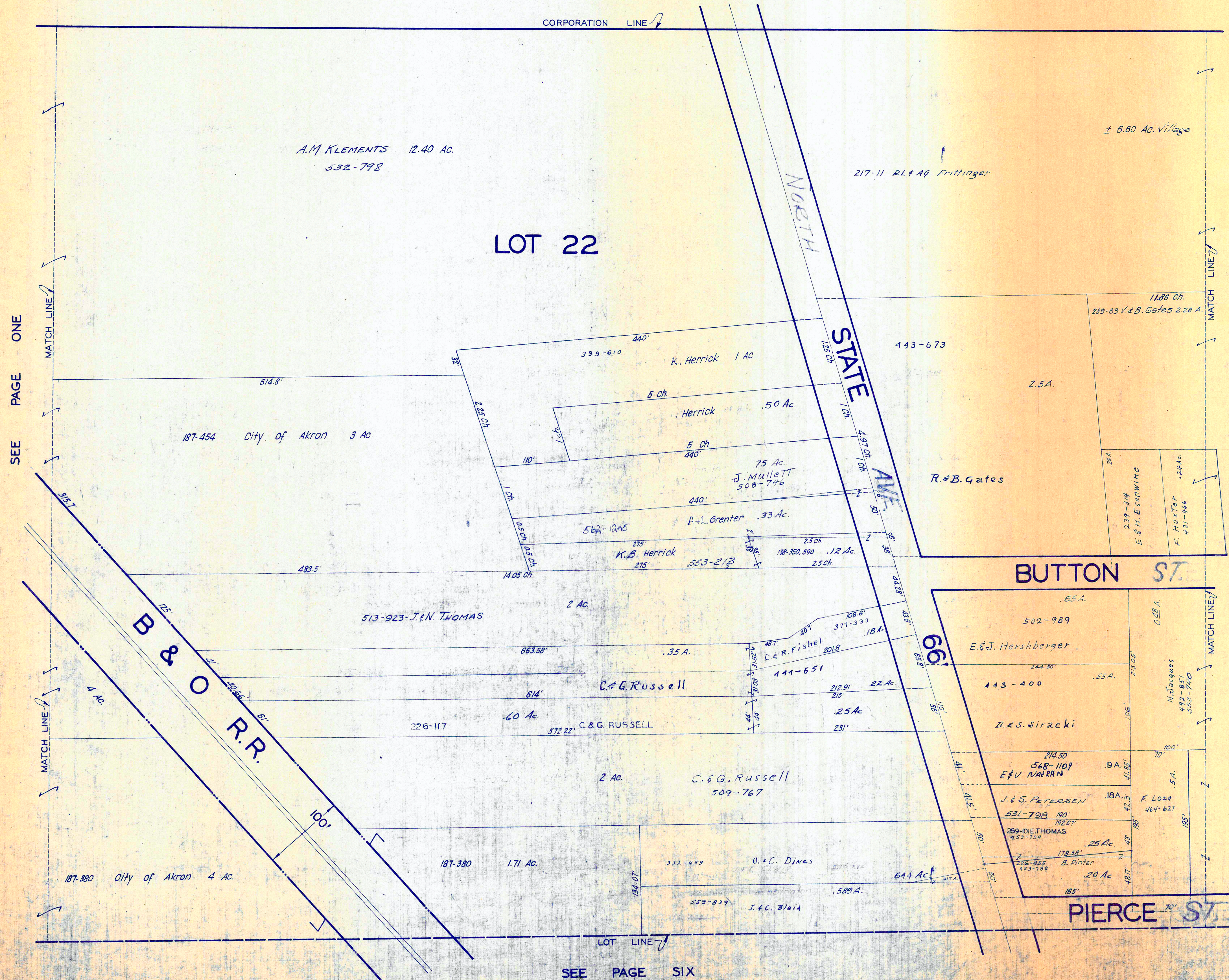
SEE PAGE TWO

JAN 1, 1976

PRINTED
JAN 14
GAUGA COUNTY ENGINEER

SEE PAGE FIVE

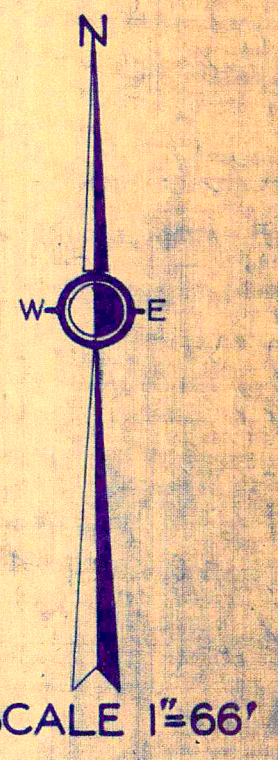
MIDDLEFIELD VILLAGE
PG. 1



SEE PAGE ONE

SEE PAGE THREE

SEE PAGE SIX

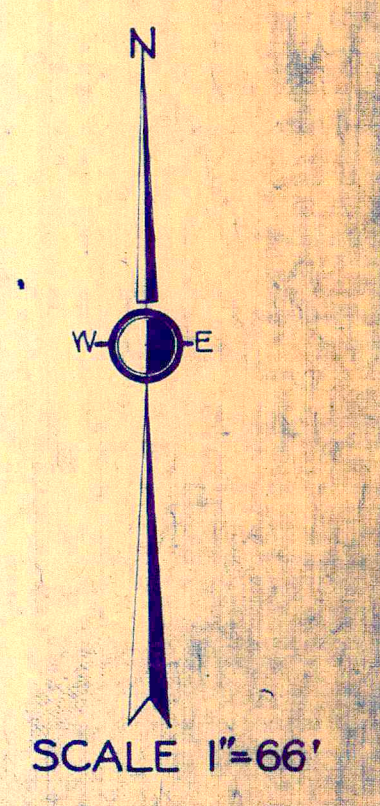
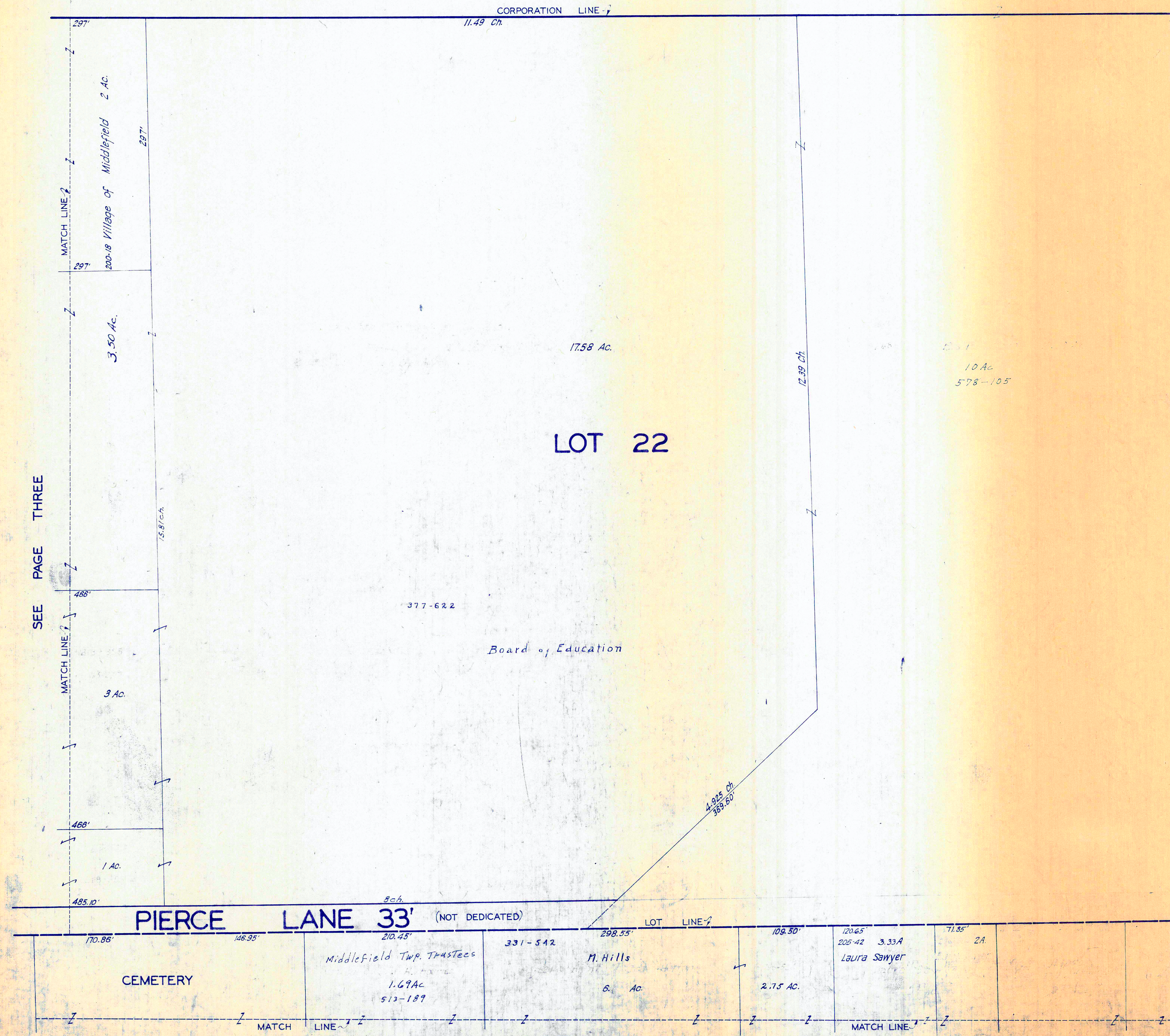


JAN 1, 1976

PRINTED

JAN 14

GEAUGA COUNTY ENGINEER



JAN 11 1976

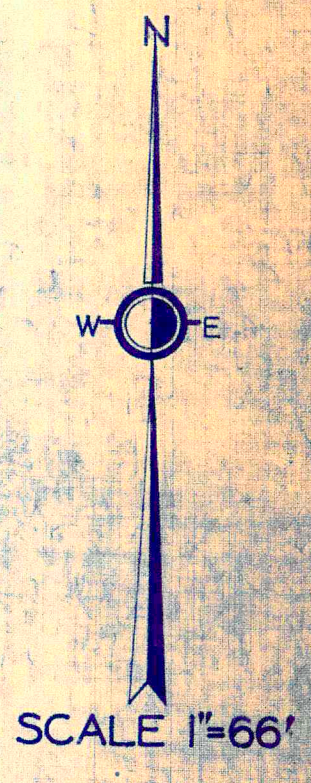
JAN 11 1976

PRINTED
JAN 14
GEauga COUNTY ENGINEER

SEE PAGE EIGHT

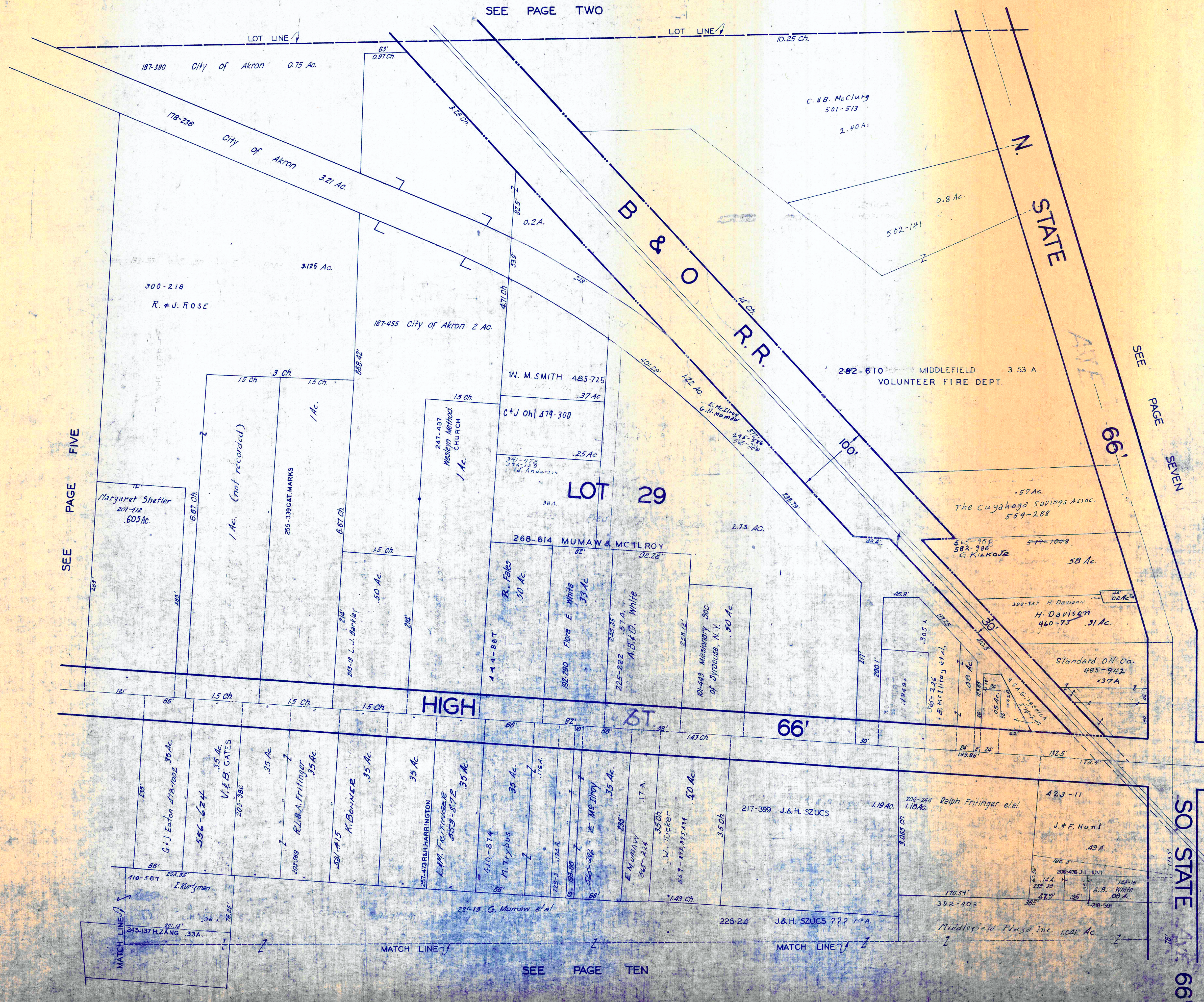
MIDDLEFIELD VILLAGE

SEE PAGE ONE



JAN + 1976

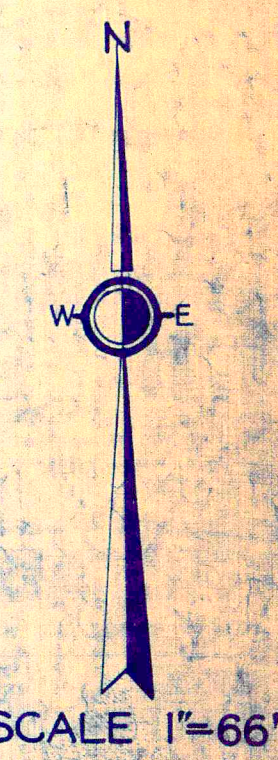
PRINTED
 JAN 14
 GAUGA COUNTY ENGINEER



SEE PAGE FIVE

SEE PAGE TWO

SEE PAGE SEVEN



JAN 1, 1975

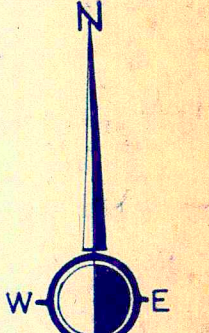
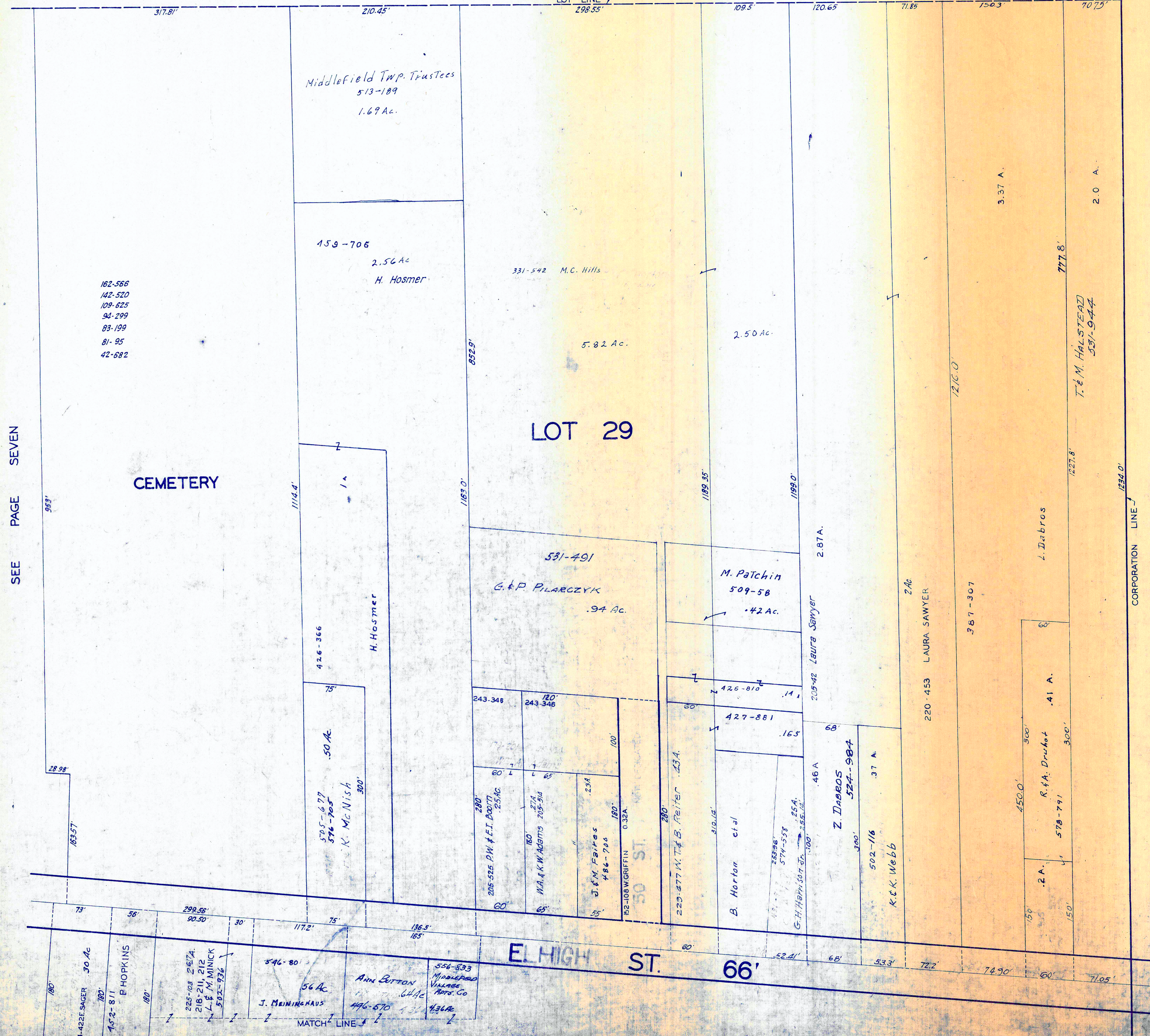
SO STATE AVE 66'

SEE PAGE TEN

PRINTED
 JAN 14
 GEauga COUNTY ENGINEER

SEE PAGE FOUR

LOT LINE 7

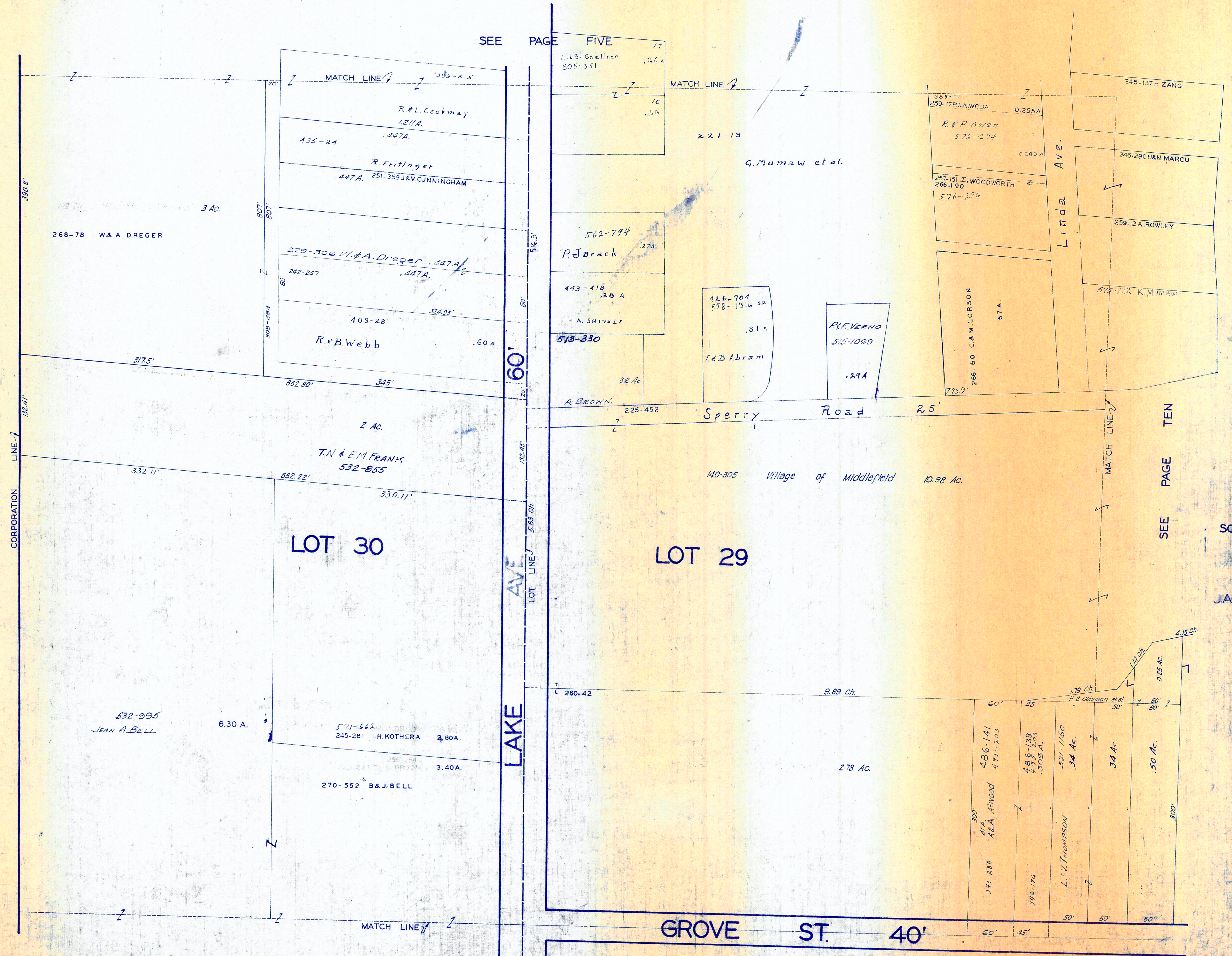


SCALE 1"=66'

JAN 11, 1976

PRINTED
 JAN 14
 GEauga COUNTY ENGINEER

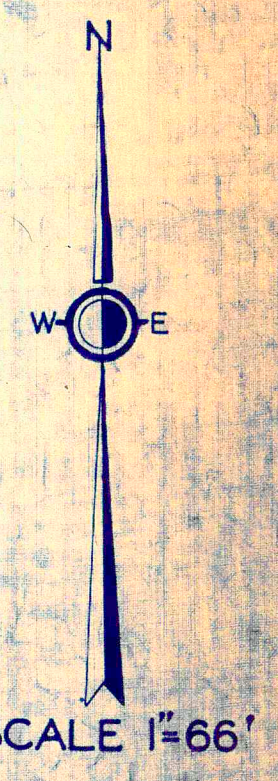
SEE PAGE TWELVE



SEE PAGE FIVE

SEE PAGE TEN

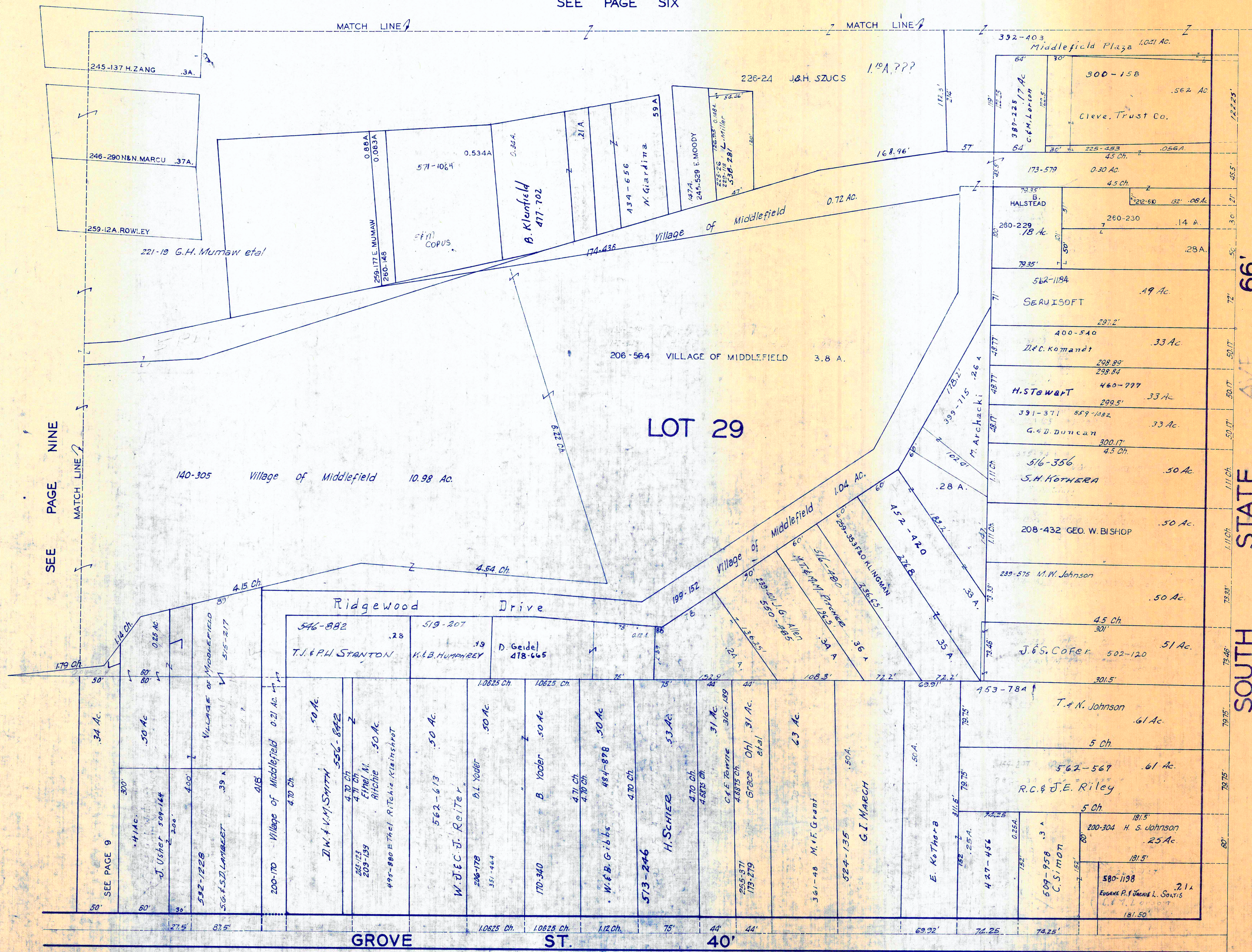
SEE PAGE THIRTEEN



JAN. 1, 1978

PRINTED
 JAN 14
 GAUGA COUNTY ENGINEER

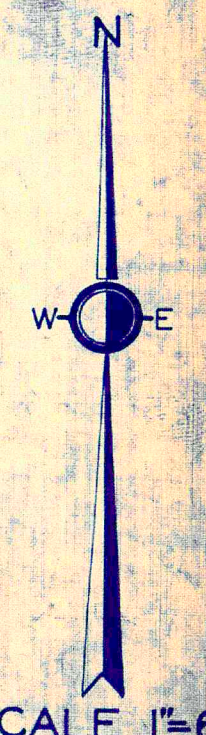
SEE PAGE SIX



SEE PAGE NINE

SEE PAGE ELEVEN

SEE PAGE FOURTEEN



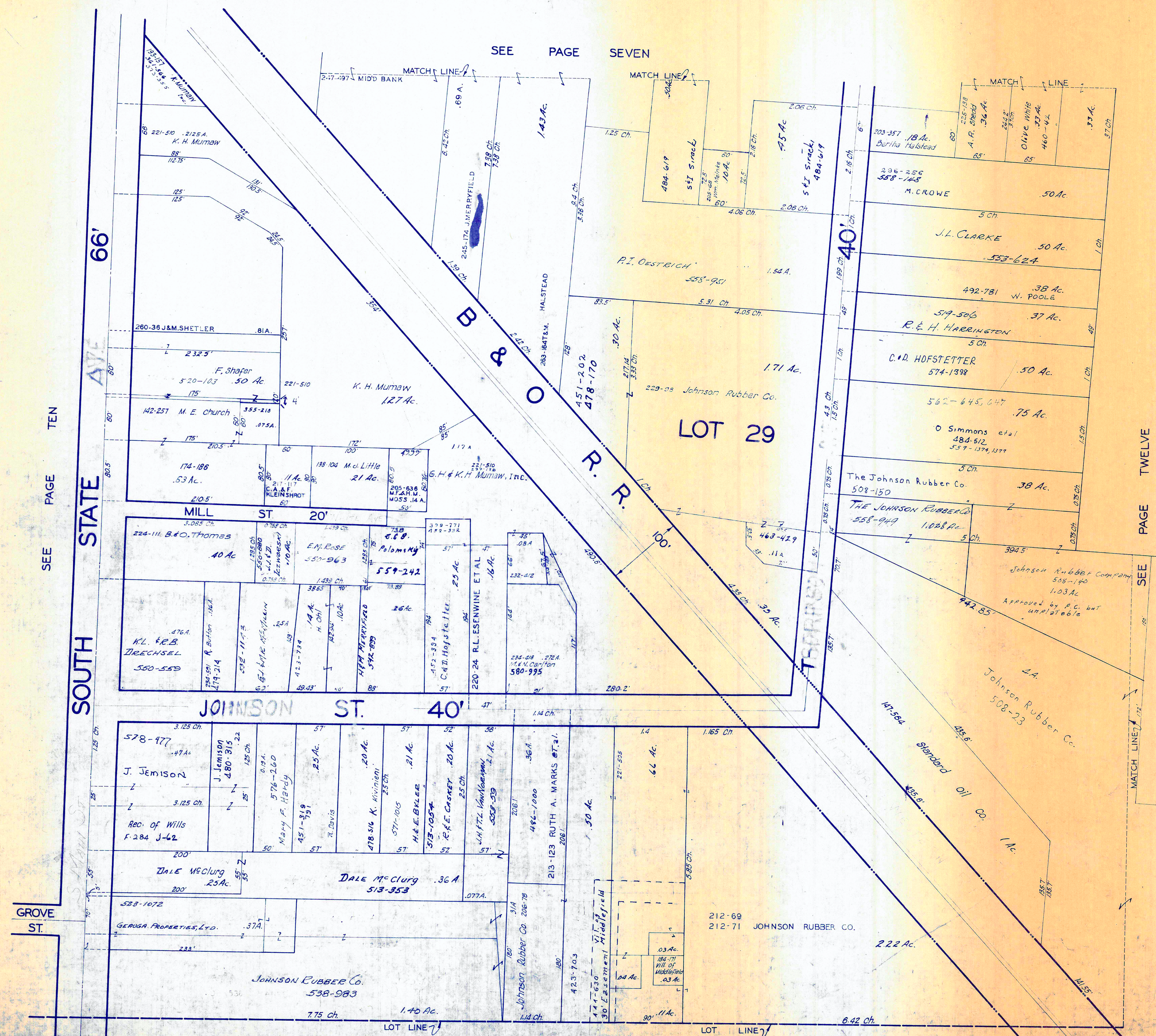
SCALE 1"=66'

JAN 1, 1976

PRINTED

JAN 14

GAUGA COUNTY ENGINEER

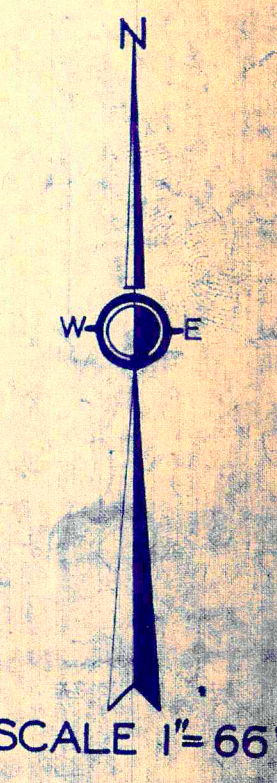


SEE PAGE SEVEN

SEE PAGE TEN

PAGE TWELVE

SEE PAGE FIFTEEN



JAN 1, 1976

PRINTED

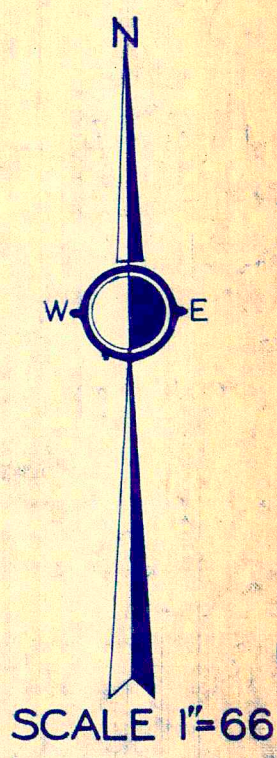
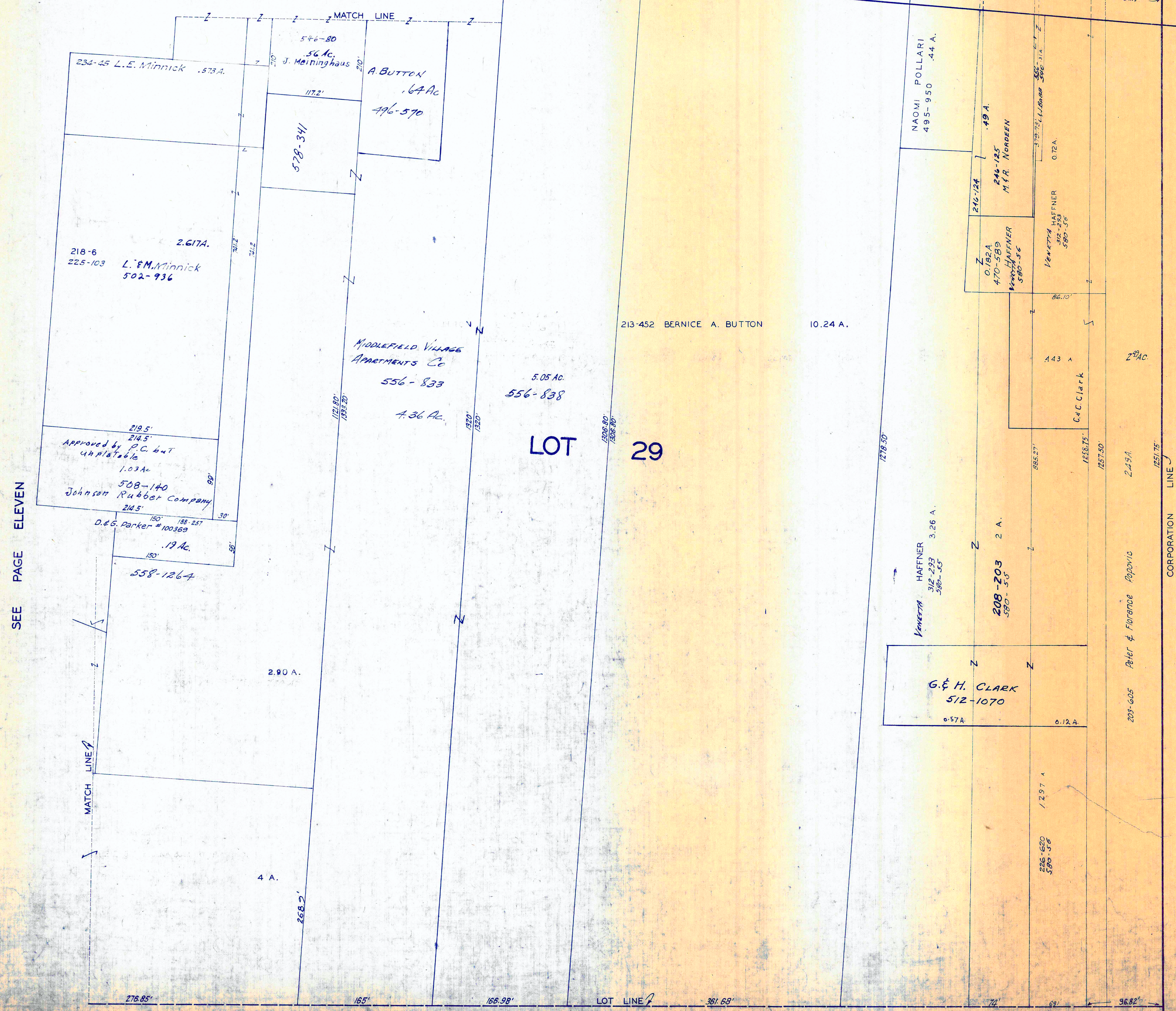
JAN 14

GEORGIA COUNTY ENGINEER

SEE PAGE EIGHT

ELVAH STREET

66'



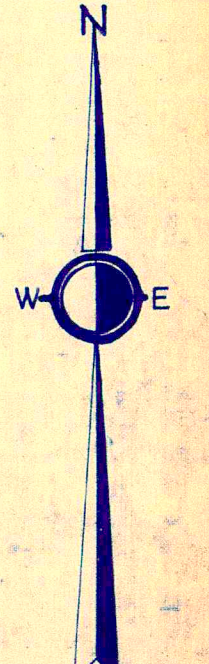
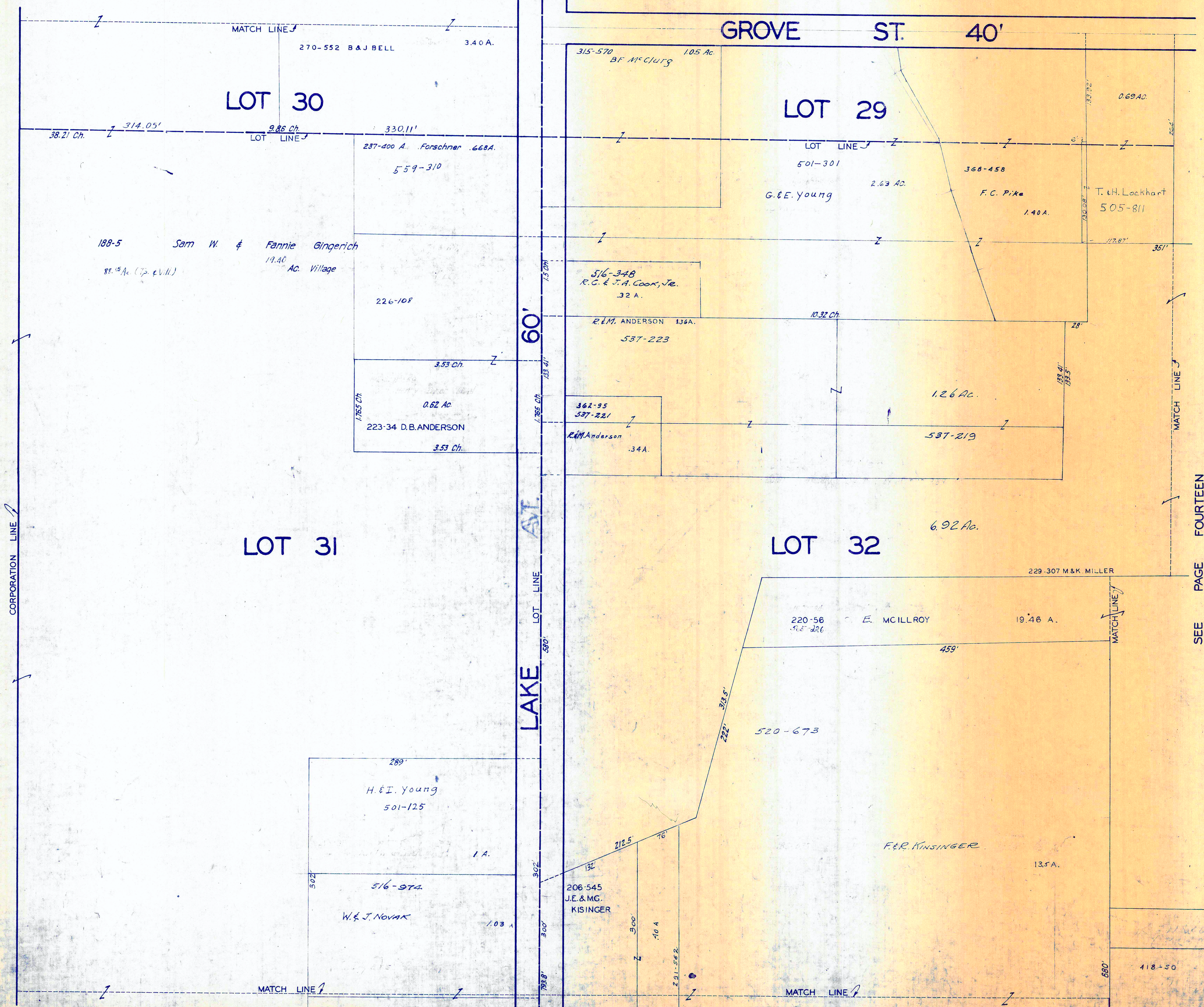
JAN 1 1976

JAN 1 1976

PRINTED
JAN 14
GEORGIA COUNTY ENGINEER

MIDDLEFIELD VILLAGE
PG

SEE PAGE NINE



SCALE 1"=66'

JAN 1 1934
JAN 1 1976

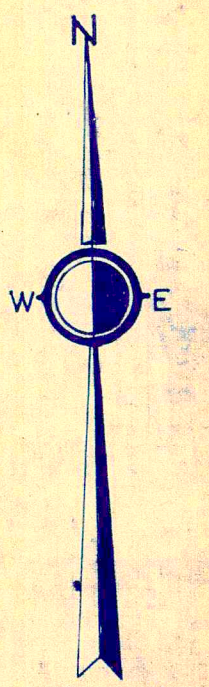
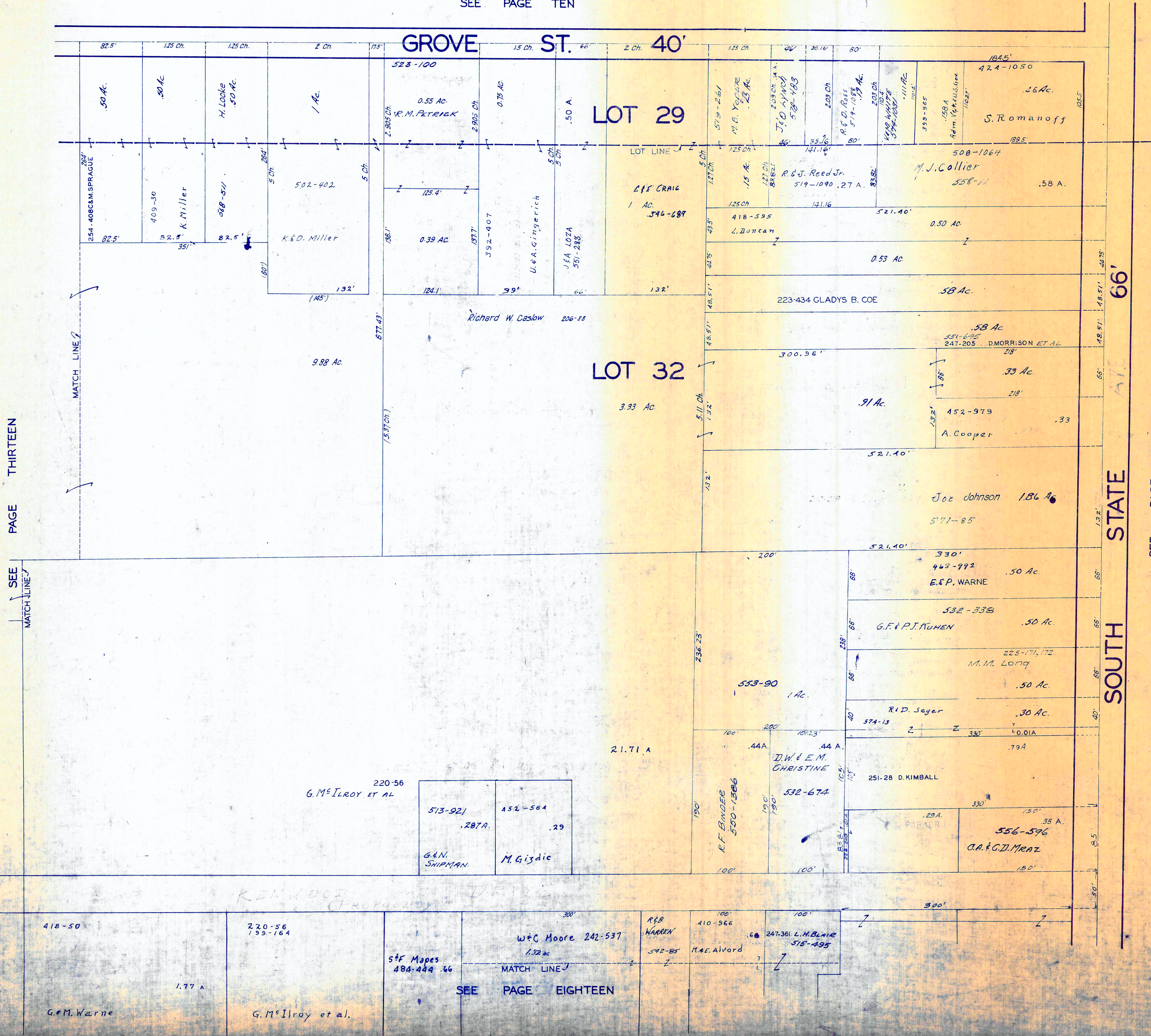
SEE PAGE FOURTEEN

SEE PAGE SEVENTEEN

PRINTED
JAN 14
GEORGIA COUNTY ENGINEER

MIDDLEFIELD VIL
PG. 13
G. M. Warne
177

SEE PAGE TEN



SCALE 1"=66'

JAN 1, 1976

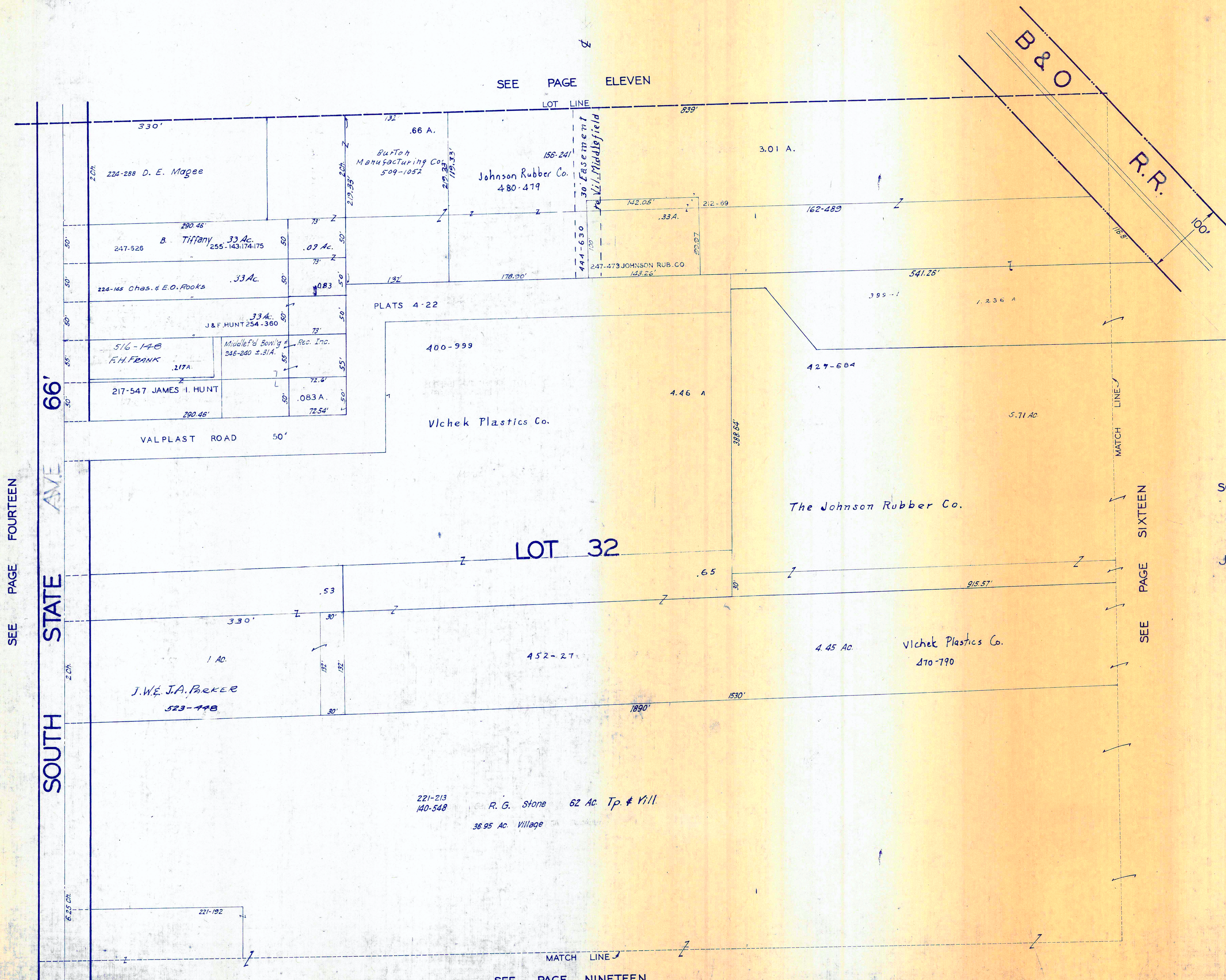
SEE PAGE FIFTEEN

PAGE THIRTEEN

SEE MATCH LINE 7

SEE PAGE EIGHTEEN

PRINTED
JAN 14
GAUGA COUNTY ENGINEER

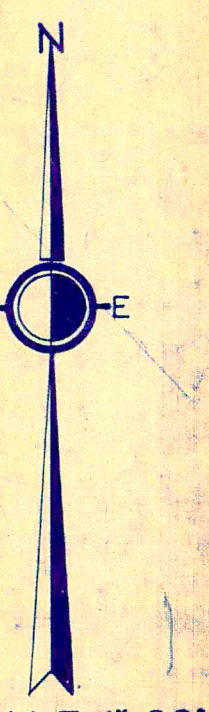


SEE PAGE ELEVEN

SEE PAGE FOURTEEN

SEE PAGE SIXTEEN

SEE PAGE NINETEEN

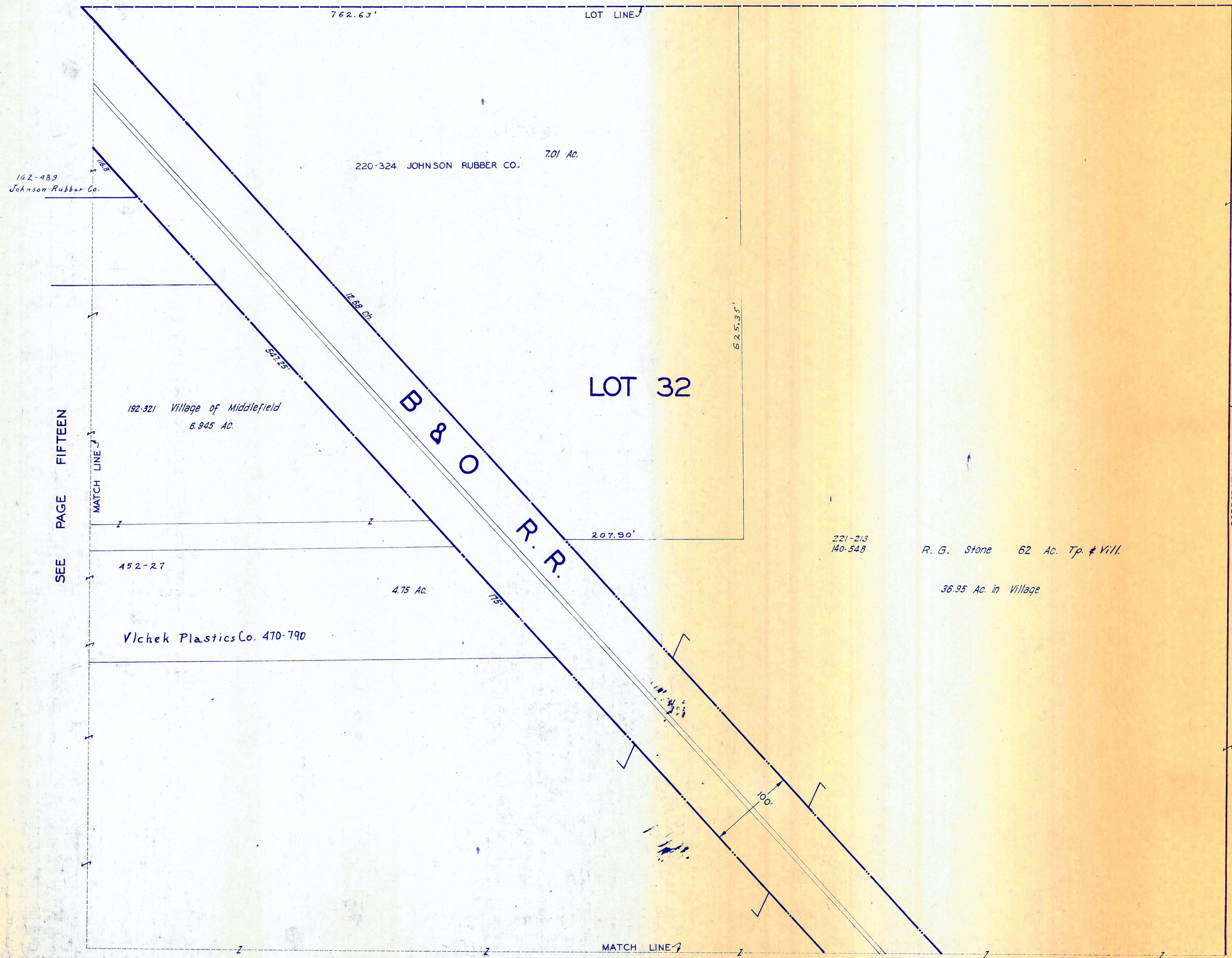


SCALE 1"=66'

JAN. 1, 1976

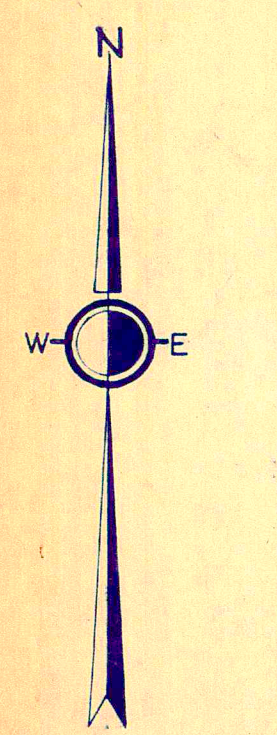
PRINTED
 JAN 14
 DEAGA COUNTY ENGINEER

SEE PAGE TWELVE



SEE PAGE FIFTEEN

SEE PAGE TWENTY

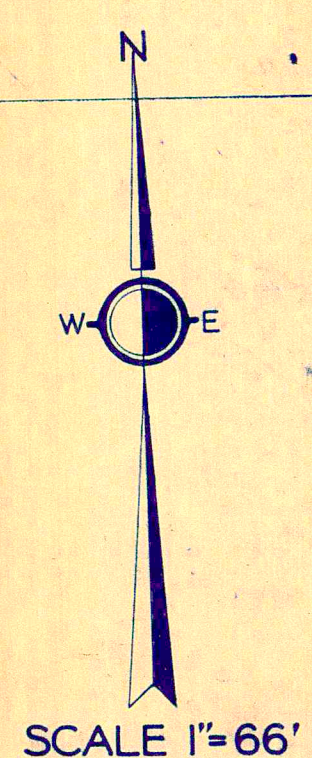
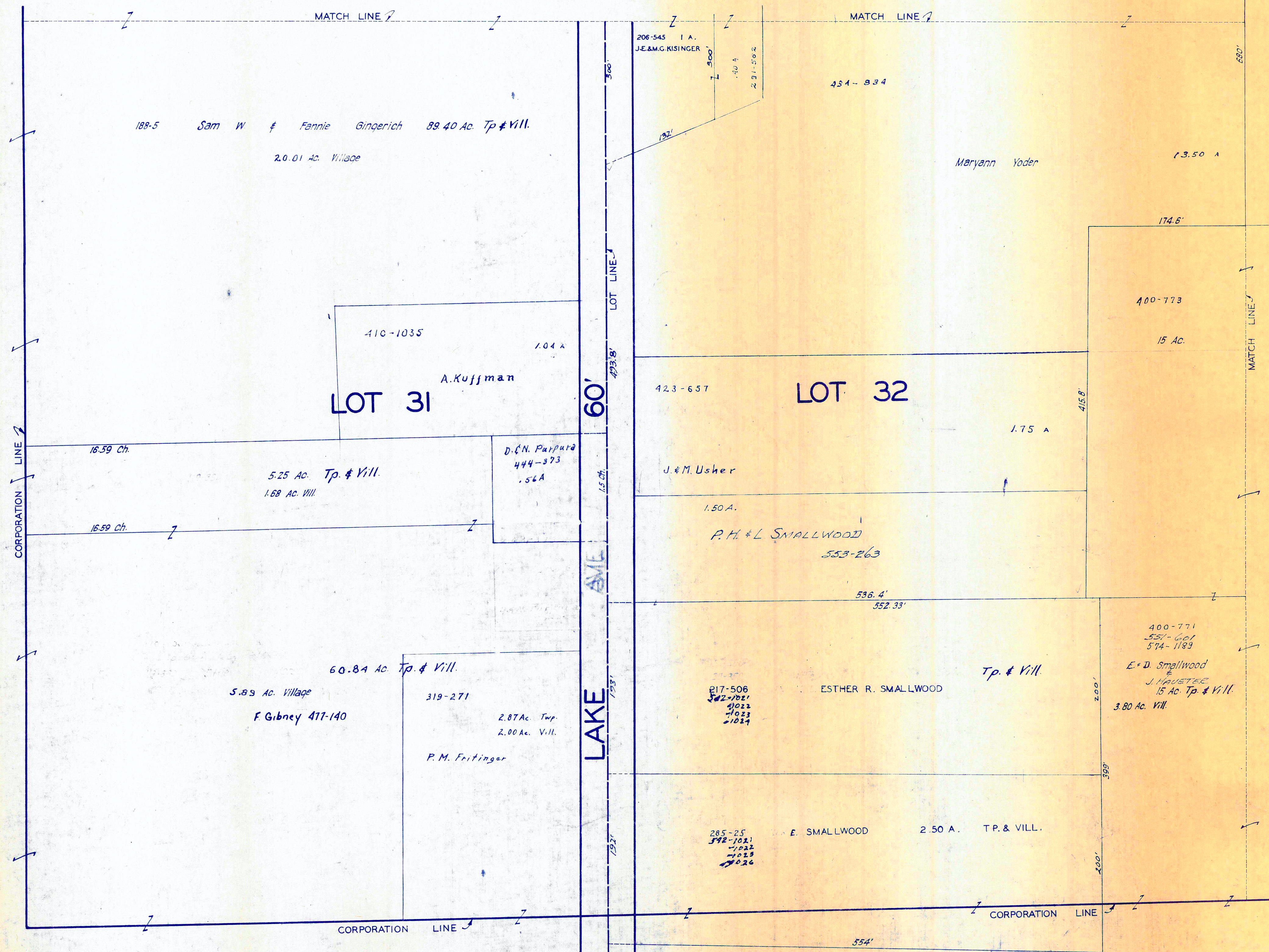


SCALE 1"=66'

JAN 1, 1976

PRINTED
 JAN 14
 GEORGIA COUNTY ENGINEER

SEE PAGE THIRTEEN



JAN 14, 1976

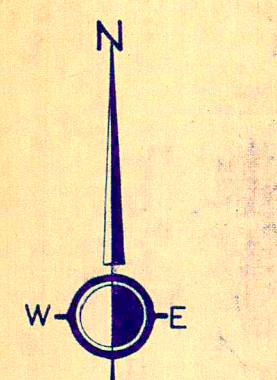
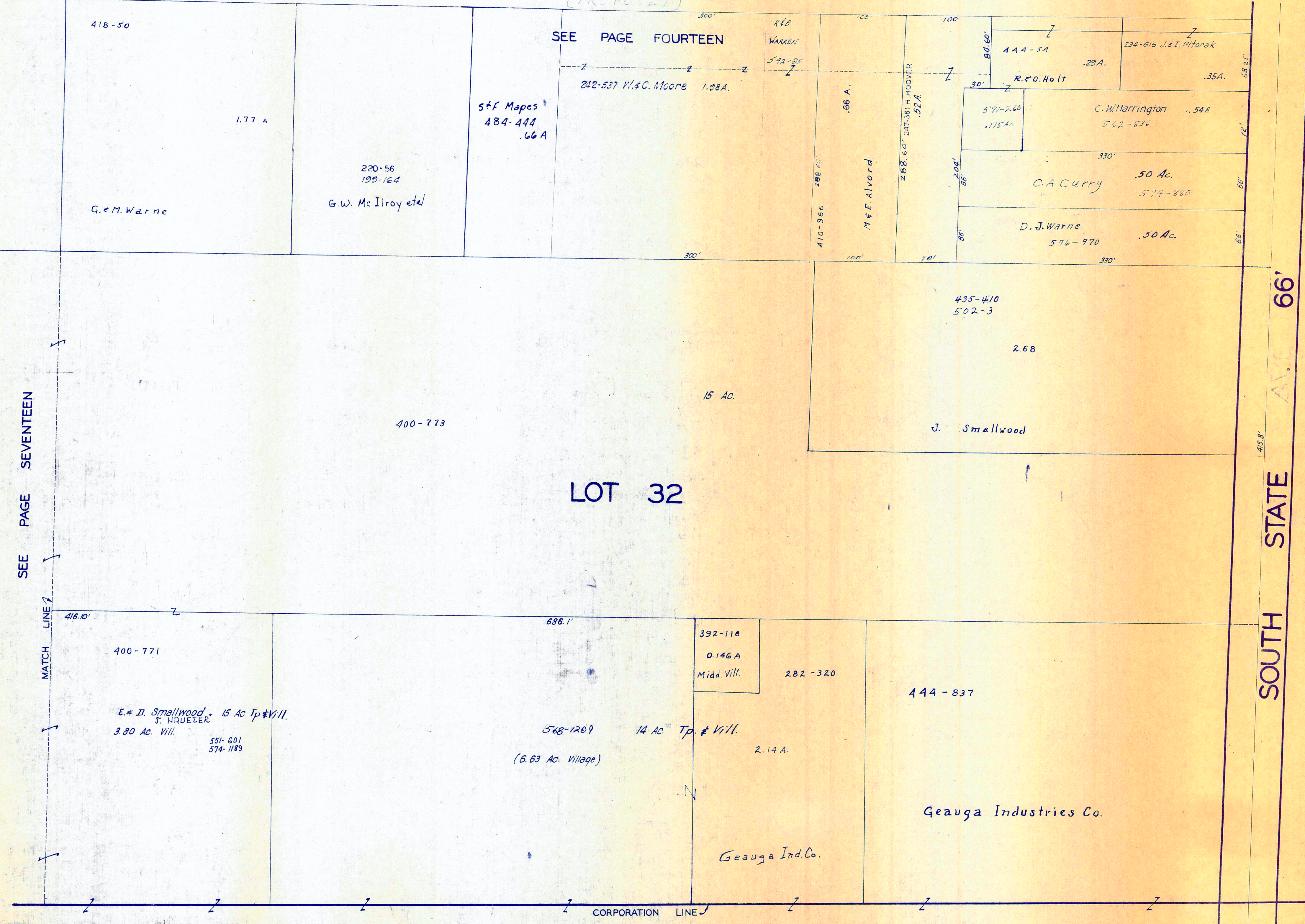
SEE PAGE EIGHTEEN

PRINTED

JAN 14

GEORGIA COUNTY ENGINEER

KENWOOD (PREPLOT) DRIVE



SCALE 1"=66'

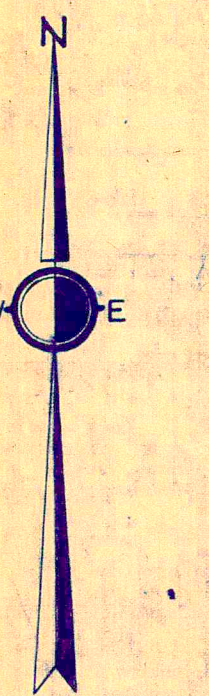
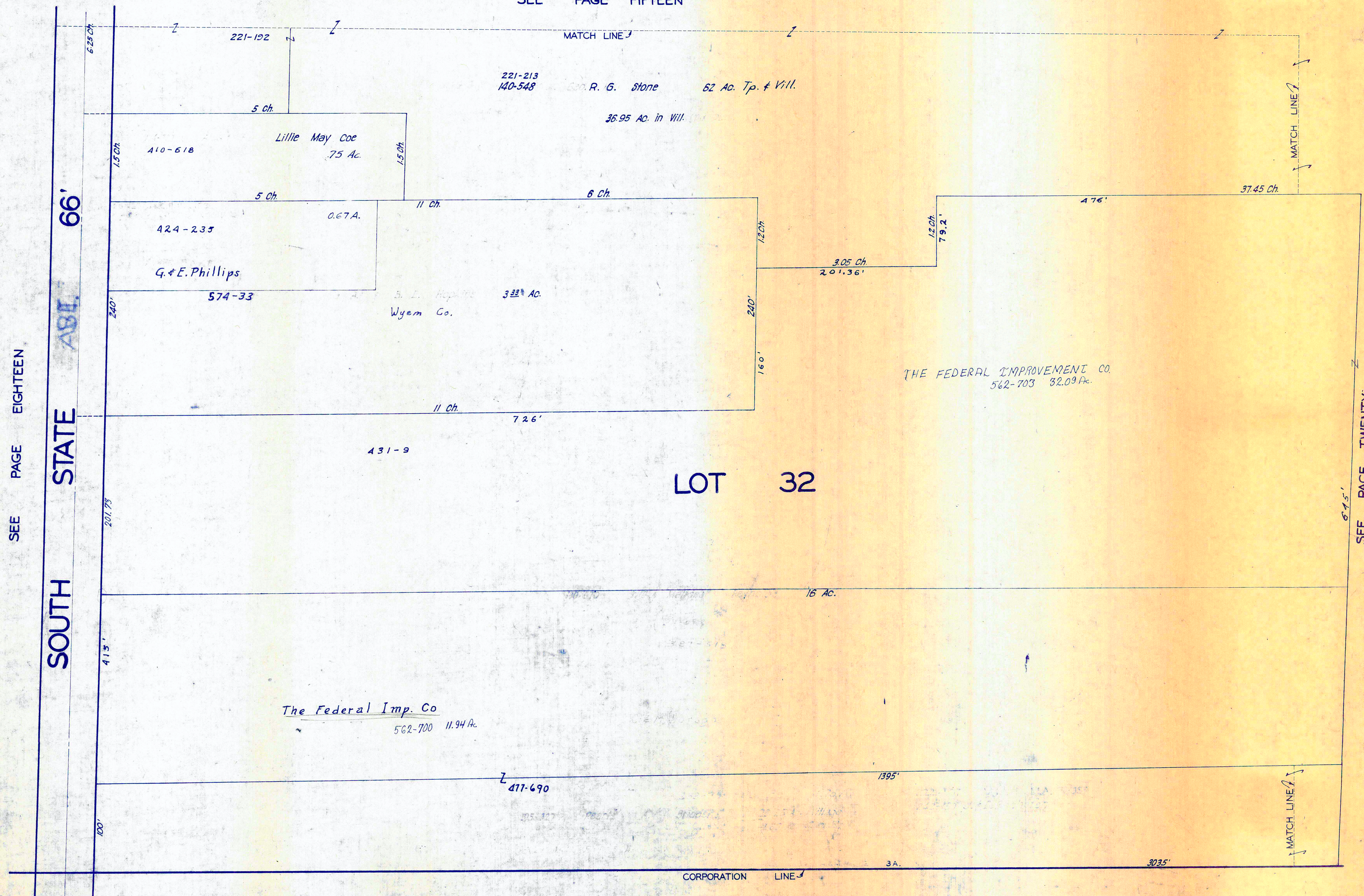
JAN 1, 1976

PRINTED

JAN 14

GEAUGA COUNTY ENGINEER

SEE PAGE FIFTEEN



SCALE 1"=66'

JAN. 1, 1976

PRINTED

JAN 14

GEORGIA COUNTY ENGINEER

SEE PAGE SIXTEEN

MATCH LINE

221-213
140-548 R. G. Stone 62 Ac. Tp. # Vill.
36.95 Ac. in Village,

37.45 Ch.

930.5'

B & O R.R.

159-456 E. T. Steele Jr et al
51.50 Ac. Tp. # Vill.
0.45 Ac. in Vill.

LOT 32

SEE PAGE NINETEEN

16 AC.

643.5'

1.65 Ac. in Tp.

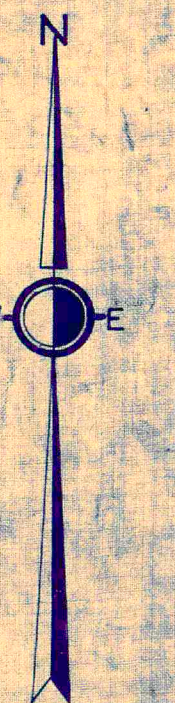
486-112 20.906 Ac.

Federal Improvement Company

3035'

CORPORATION LINE

CORPORATION LINE



SCALE 1"=66'

JAN. 1978

JAN. 1, 1978

PRINTED

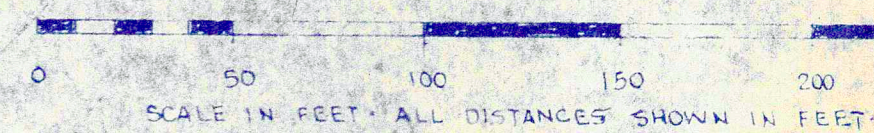
JAN 14

GEAUGA COUNTY ENGINEER

PLAT OF
M. & B. SUBDIVISION
IN
LOT NO. 22 & LOT NO. 29
MIDDLEFIELD VILLAGE
GEAUGA COUNTY OHIO

SCALE: 1 IN. = 50 FT.

IRON MONUMENTS LOCATED AT POINTS MARKED (•)



I hereby certify that this plat is a true and correct representation of the premises shown and was made by me at the instance of M. & B. Developers, Inc.

T. R. Root Registered Surveyor 2888
Chardon Ohio June 5, 1972

Total area of sub-lots 4.853 Ac.
Total area of dedicated streets 1.1789 Ac.
Total length of dedicated streets 1079.5 ft.

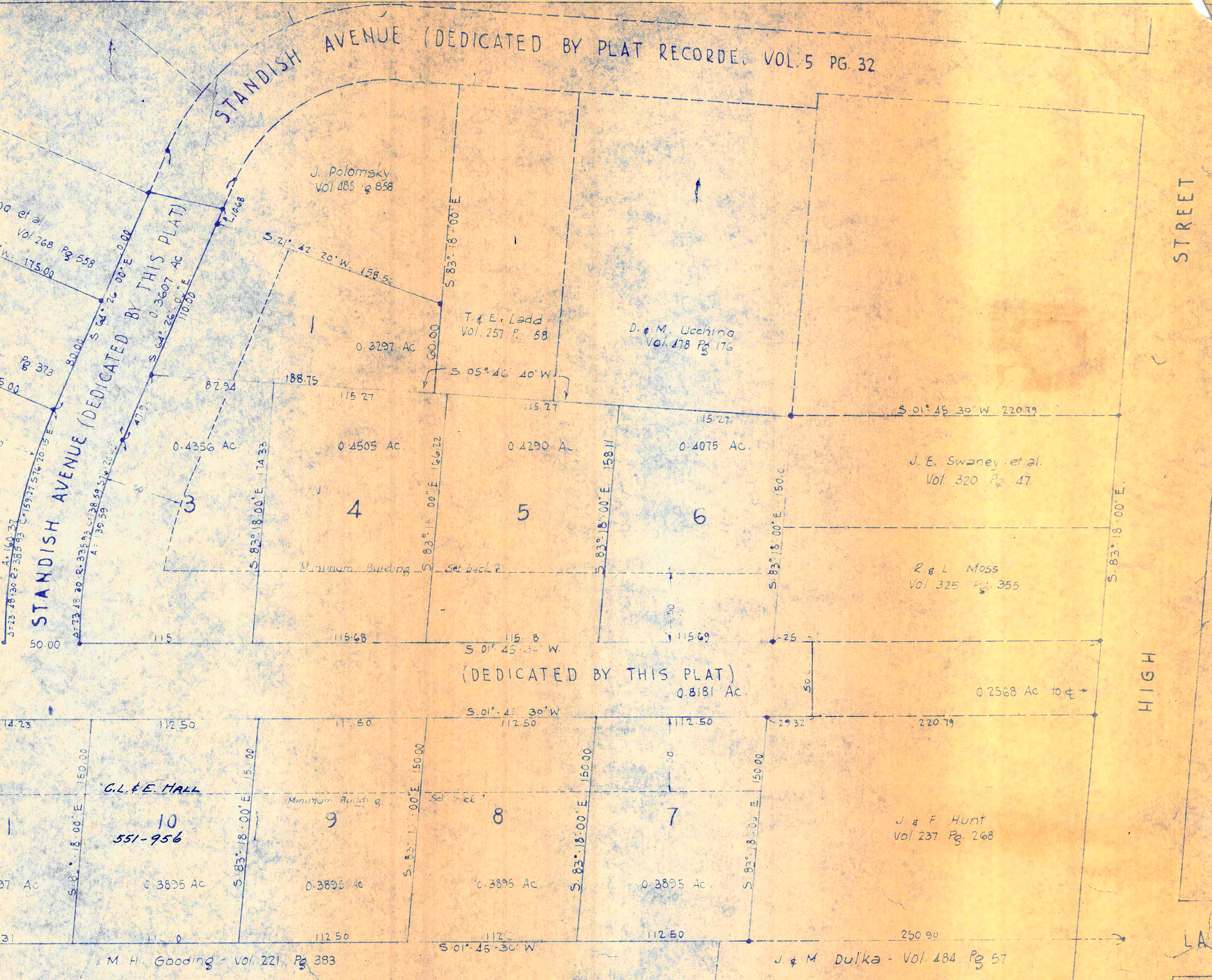
M. & B. DEVELOPERS, INC., an Ohio corporation, owner of all the land proposed for subdivision shown hereon, claiming title by or through instrument recorded in volume 126, page 225, of Geauga County records of deeds, hereby accepts and adopts this plat and certifies that the same was prepared at its order and request. Said Corporation hereby dedicates to public use for highway purposes the area within the boundaries of Standish Avenue as the same are shown and certifies that said area is free of all encumbrances. Said Corporation now requests acceptance of this Dedication and Subdivision by Middlefield Village, and that this Plat then be placed upon the records of Geauga County.

In witness whereof, said Corporation sets its hand and Corporate seal at Ohio this 5th day of January, 1973

M. & B. DEVELOPERS, INC.
Witness by _____ its _____
Witness by _____ its _____

State of Ohio ss. Before me, a Notary Public in and for said County and State, personally appeared the above named M. & B. Developers, Inc. by _____ its _____ and _____ its _____ who acknowledged that they did sign the foregoing instrument, and that the same is the free act and deed of said Corporation and the free act and deed of each of them personally and as such officers. In testimony whereof, I have hereunto set my hand and official seal at _____ Ohio this 5th day of January, 1973

Notary Public



FOR MIDDLEFIELD VILLAGE
Acceptance recommended _____
Date _____ for _____
Acceptance recommended Thomas W. Jack, P.E.
Date Jan. 26, 1973 for Village Engineer
Acceptance recommended _____
Date _____ for _____
The subdivision of land as shown on this Plat is accepted on behalf of Middlefield Village, and the land dedicated to public use is hereby accepted as such for said Village.
Mayor _____
Council President _____
Clerk _____
by Ord. #481 adopted _____ 1972

FOR GEAUGA COUNTY
Entered for transfer _____ 1973
Transferred _____ 1973
Auditor of Geauga County _____
Filed for Record _____ 1973
Recorded _____ 1973 No. _____ Page _____
Gauga County Plat Records
Recorder of Geauga County _____

PRINTED

JAN 14

GEAUGA COUNTY ENGINEER

10-5
1 JANUARY 1976